

# เครื่องสำรองไฟฟ้าแบบ OLIN UPS

## URANUS 1-20KVA

### LOW FREQUENCY TRUE ON-LINE DOUBLE CONVERSION UPS

CHUPHOTIC



#### Multiple CPU Intelligent Control :

Advanced multiple CPU intelligent control is one digital software processed by microprocessor, can precisely and integrally control UPS data, and provide with enough calculation capacity, so that UPS can be under the best operation at any time.

#### Advance IGBT Inverter Technology :

Combined advanced IGBT technology with high frequency wider-modulated technology (PWM), the technology can reduce systematic noise and power loss, so that customer can obtain high-quality power output and optimized efficiency under each operation load.

#### Intelligent By-Pass Switch :

UPS can automatically monitor public power voltage under by-pass circuit mode, if input voltage exceeds rated value -20%~ +15%, it shall automatically terminate its voltage output so as to protect form loaded equipment and UPS it self.

#### Advance Phase-Balanced Technology :

With most advanced phase-balanced technology now, it features best stability, even if loss-phase, it still operate at normal condition, especially in some worse power supply environment.

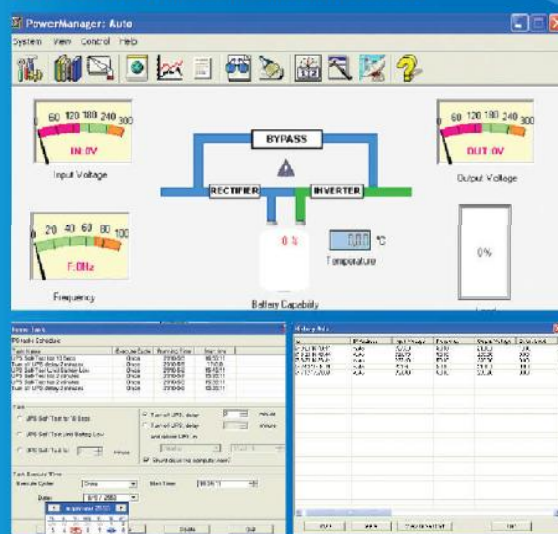
#### Battery Switch-On Function :

The device features its battery switch-on function, at no public power supply for UPS device, the battery can supply with power alternatively, and then provide with stable AC power output, thus more conveniently provide the customer with flexible solution for power supply.

### Features

- True On-Line Double Conversion Technology
- Advance IGBT Inverter Design
- Multiple CPU Intelligent Control
- Sine Wave Pulse Width Modulation (SPWM)
- Output Voltage 220 VAC  $\pm 1\%$
- True Sine Wave Output with less than 3%THD
- 100% Backup guarantee with no Break Power
- Built in Output Isolation Transformer
- Multiple Protection Function of Over Voltage
- Over Load, Short Circuit and Over-Temperature
- UPS Built in Battery
- Special Industrial Design, Ensure the Safety in Worse Environment
- Reliable, Filtering and Stable Sine Wave Output
- Cold start with DC Function
- Reset Alarm Switch
- EMI/RFI and Power Line Noise Protection
- Key Parts with Redundant Design, Higher Reliability
- On Line, Input, Output, Frequency, Load, Battery, Temperature, Event Log, Status LCD Display
- TIS 1291-2545, CE/EN62040-1, EN62040-2
- ISO9001:2008 Certified Manufacturer
- Remote Monitoring and SNMP option
- Power Manager Software Supported in Novell/Unix System Window 95/98/NT/2000/ME/XP

### Power Manager UPS Monitoring and Management Software



# URANUS 1-20KVA

## TRUE ON-LINE DOUBLE CONVERSION UPS

Model		SU1.05K	SU2K	SU3K	SU5K	SU6K	SU8K	SU10K	SU12K	SU15K	SU20K
Power Rating	VA	1050VA	2000VA	3000VA	5KVA	6KVA	8KVA	10KVA	12KVA	15KVA	20KVA
	W	840W	1600W	2400W	4KW	4.8KW	6.4KW	8KW	9.6KW	12KW	16KW
TECHNOLOGY	Microprocessor Controlled/Sine Wave Pulse Width Modulation(SPWM)										
INPUT SYSTEM											
Phase	Single phase + N										
Voltage Range	220 VAC± 25%										
Frequency	50 Hz ± 10%										
OUTPUT SYSTEM											
Voltage	220 VAC ± 1%										
Frequency	50 Hz ± 0.5%										
Wave Form	True sine wave										
Output Power Factor	0.8										
Efficiency	> 85%					> 95%					
THD (%)	<3% Linear load,<5% Non linear load										
Transfer Time	Zero Transfer Time.										
Case Factor	4:1										
PROTECTION SYSTEM											
Overload Capability	After the overload 125% for 70 Sec,150% for 30 Sec, Then it automatic to bypass. Automatic recovery when load comes back to normal										
Short Circuit Protection	Current limits, Automatically shut down and without fuse switch protection										
Over Temperature	The internal temperature of UPS >85°C it will automatically to bypass										
Battery Protection	Automatically shut down protection when battery under voltage										
UPS Abnormal	Automatically to bypass mode										
AUDIBLE ALARM											
Battery Discharge	Alarm every 4 seconds when Power supply by battery and without main power Low battery alarm every one Sec, Low battery shutdown continuous alarm										
UPS Fault	Continuous alarm										
BATTERY											
Battery Type	Sealed Lead Acid Maintenance Free										
Battery Voltage	96VDC (8x12V/7.5 Ah)		192VDC (16x12V/7.5 Ah)				192 VDC				
Recharging Time	90% capacity after 8 hours										
Special Backup Time	Specified By Customer (External battery)										
INDICATOR											
LED display	Mains, Inverter, Bypass, Overload, Battery and Fault										
LCD display	Operating Mode, Input voltage, Output voltage, Frequency, Battery voltage, %Load, Event Log, Fault and Temperature										
COMMUNICATION INTERFACE											
Communication	RS-232 , SNMP (optional)										
Monitoring Function	Power, UPS Shutdown, UPS status, UPS self-test, Auto-save Files										
STANDARD											
LED display	Mains, Inverter, Bypass, Overload, Battery and Fault										
LCD display	Operating Mode, Input voltage, Output voltage, Frequency, Battery voltage, %Load, Event Log, Fault and Temperature										
COMMUNICATION INTERFACE											
Communication	RS-232 , SNMP (optional)										
Monitoring Function	Power, UPS Shutdown, UPS status, UPS self-test, Auto-save Files										
STANDARD											
SAFETY/EMC	TIS.1291-2545, EN62040-1:2008,EN62040-2,EN55022:2006, EN61000-3-2:2006										
ENVIRONMENT											
Temperature	-10°C - 50 °C										
Humidity	0-95% (non-condensing)										
Audible Noise	< 50 dB (at 1 meter)						< 55 dB (at 1 meter)				
PHYSICAL											
Dimension(W x D x H)mm.	260x490x500			260x630x760				343x620x740			
Weight (kg.)	30	30	62	75	80	90	90	10	120	130	

\* All specification are subject to change without prior notice

EW. URANUS BRC Rev.1.00/2011

ตัวแทนจำหน่าย