

เครื่องสำรองไฟฟ้าแบบ TRUE ON-LINE

VENUS SMART DSP TRUE ON-LINE DOUBLE CONVERSION UPS 1050-3000VA

VENUS SMART 1050-3000VA

CHUPHOTIC

DSP TRUE ON-LINE DOUBLE CONVERSION UPS



Features

- True On-line Double Conversion UPS
- Advance DSP digital Control Technology
- Power Factor Correction (PFC) design PF >0.99
- Wide range of Input and Frequency
- Output Power Factor 0.8
- Zero transfer time
- Output Voltage 220V \pm 1%
- True Sine Wave Output with less than 3% THD
- Self-diagnosis at UPS start-up
- Advanced Battery Management (ABM)
- Lightning and Surge Protection
- Short Circuit and Overload Protection
- External Battery Bank(Optional)
- Fully Screen LCD
- EMI/RFI Noise filter
- RS232/RS485/USB Communication with UPSilon monitoring
- Network SNMP/HTTP (Optional)
- TIS 1291-2545/CE IEC62040
- ISO 9001 certified factory

Online High Frequency Design

Adopting the design of smart-wide of high frequency online, It blocking abnormal power to the load impact effectively, and ensuring the stability and reliable of output power, to make the load running safely.

Advance DSP Control Technology

The advance DSP digital control technology enable UPS more stable performance and with better quality.

Active Input Power Factor Correction(PFC)

Digitalized control of the PFC enable the UPS to keep the Input power factor above 0.99 to prevent possible electric grid pollution and meanwhile mostly save the cost.

Wide Input and Frequency Range

We intentionally widen the range of input factors to make sure the UPS can apply to various environment, which will Effectively sustain the battery charging even in unstable power environment so that the service life of the UPS could be obviously prolonged.

Adaptive Load Management

This technology allows the UPS to be set up at a fixed 50Hz or 60Hz output while it also can intelligently monitor power usage and automatically sheds and reconnects loads in order to prevent generator overload.

Support the Generator

The wide range of input voltage and frequency can effectively separate the harmful electric wave produces the generators and provide safe and reliable power supply.

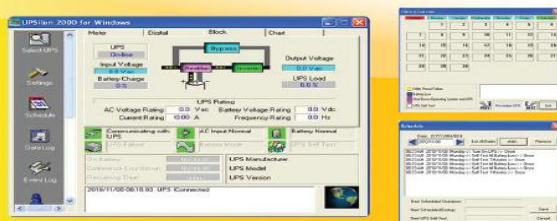
LED/LCD DISPLAY SHOWS REAL-TIME STATUS



1. LCD Display
2. On-Line Mode
3. Battery Mode
4. Output
5. Bypass Mode
6. Function Switch
7. ON/OFF Switch

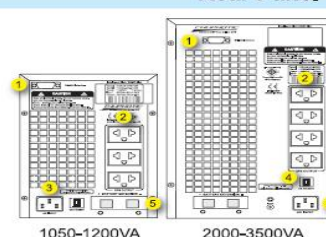
UPSilon 2000

UPS Monitoring & Automatic Shutdown



Network Optional: SNMP/HTTP NETWORK

Rear Panel



1. RS-232 Port
2. Outlets
3. AC input
4. Circuit breaker
5. Batt Ext.

1050-1200VA

2000-3500VA



TIS - 1291-2545



IEC - 62040



DSP True On-Line Double Conversion UPS

Model	VNS1050	VNS1600	VNS2000	VNS3000
Power Rating PF= 0.8	1050VA	1600VA	2000VA	3000VA
VA				
W	840 W	1280W	1600W	2400W
Technology	DSP Control High Frequency and Dual Conversion On-line With IGBT Advance Power Factor Correction (PFC) Technology			
INPUT				
Phase	Single Phase			
Voltage Range	Half load : 120-300Vac, Full load 165-276Vac			
Frequency	45-54 Hz			
OUTPUT				
Phase	Single Phase			
Voltage	220V±1%			
Frequency	50Hz ±0.1%			
Efficiency	>85% _c (Full load)			
Total Harmonic Distortion	Sine wave, <3% (Linear Load) , <5% (Non-Linear Load)			
Transfer Time	Zero Transfer			
Overload Capability	105-125% 50 sec , >130-150% 25sec, >150% 300ms automatic transfer to bypass			
PROTECTION				
Battery Protection	Low battery shutdown			
Output Short Circuit	Automatically Shutdown			
UPS Abnormal	Continuous beep and red LED on			
Overload	Beep once every second			
Fault	Continuously beep			
Input L-N-G Warning	Line LED blink and Alarm			
Noise Filter	EMI / RFI , full time suppression <-45 dB			
Over Temperature	Alarm and cut off			
Fan Failure	Alarm			
Outlet	3pcs x National	4pcs x National		
BATTERY				
Type	Sealed lead acid maintenance free			
Number of Batteries	12V/7.5Ah x 3	12V/7.5Ah x 8		
Battery Voltage	36Vdc	96Vdc		
Charging Time	90% capacity after 8 hrs.			
Special Backup Time	Specified by customer (External battery)			
INDICATOR				
LED Display	Input, Inverter, Bypass and Battery			
LCD Display	Input, Output, Frequency, Bypass, Battery, Load, VA, Watt, Backup, Charger, Temperature and UPS fault status			
Audible Alarm	Line failure: beep one every 4s, Battery low and Fan fail: beep once every 1s, L-N-G warning: Beep once every 2min. Overload :Beep 0.5s, Bypass: Beep once/ 2 min, Fault :Beep continuous			
COMMUNICATION INTERFACE				
Intelligent Port	RS232/ USB and SNMP Optional			
STANDARD				
Safety	EN62040-1-1, EN50091-1			
EMC	TIS. 1291-2545, EN62040-2 , EN50091-2, EN61000-2-2, EN61000-3-2/-3, EN61000-4-2/-3/-4/-5			
ENVIRONMENT				
Temperature	0-40 °C			
Humidity	0-90 % (non-condensing)			
Audible Noise	≤45dB (at 1meter)			
PHYSICAL				
Dimension (WxDxH) cm	14.5x40x22	42.4x19x32.8		
Weight (kg)	11.5	26.3	26.3	26.3

* All specification are subject to change without prior notice.

EW.Venus-Smart1-3k BRC Rev.1.00/2011

ตัวแทนจำหน่าย